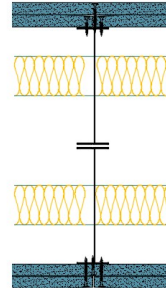


## TWI146-B-60(2x50)(360) - SPEEDLINE System Data Sheet - Version V1 (24-10-23)

Twin SPEEDLINE 146mm 'I' Stud Partition @600mm Ctrs, with 2x BG Gyproc 15mm SoundBloc each side, 50+50mm APR



### System Performance Breakdown

Fire Resistance:

BS476 Part 22:1987:

Test Ref & Date or Applied Ref & Report:

Max Height:

Thickness:

Duty Grade: BS 5234: Part 2:1992:

Sound Insulation:

90/90 Minutes (Integrity/Insulation).

**BTC 17440F - BRE Report P102396-1011A**

**Refer to Speedline Specification Clause**

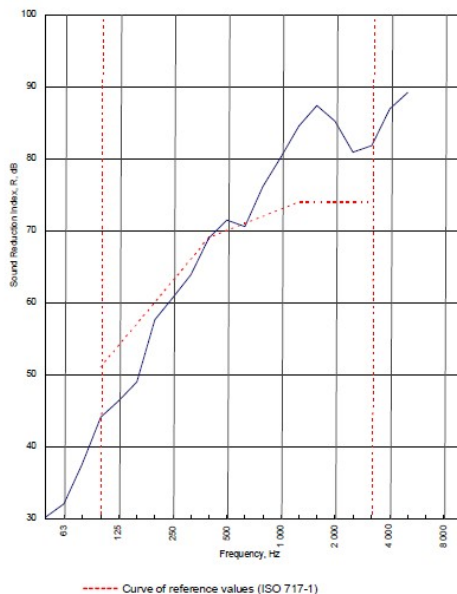
**360 mm.** (At Base Track, Excluding Finishes)

**Severe - Annexes A-F**

**70  $R_w$  dB, -10 C<sub>tr</sub>** Date Tested or Assessed Against - TWI50-B-60(2x50)(200)

Test Code:  
H17568AA  
Test Date:  
01/09/2011

Freq. Hz	R dB
50	30.2
63	32.0
80	37.5
100	44.1
125	46.3
160	48.9
200	57.6
250	60.7
315	63.9
400	69.0
500	71.5
630	70.6
800	76.2
1 000	80.2
1 250	84.5
1 600	87.4
2 000	85.2
2 500	80.9
3 150	81.8
4 000	86.9
5 000	89.2
6 300	
8 000	
10 000	



Rating according to  
BS EN ISO 717-1:1997

**$R_w$  (C;Ctr) = 70 (-3;-10) dB**

Max dev. 8.1 dB at 160 Hz

Evaluation based on laboratory measurement results obtained by an engineering method:

$C_{50-3150}$  = -8 dB     $C_{50-5000}$  = -7 dB     $C_{100-5000}$  = -3 dB

$C_{8,500-150}$  = -19 dB     $C_{8,500-4000}$  = -19 dB     $C_{8,100-5000}$  = -10 dB

TESTED AT ONE OF THE UKAS ACCREDITED LABORATORIES BELOW

B.T.C  
(H-Ref on Graph)



B.R.E



AIRO



S.R.L



Customer: Metsec plc Hepsec Division

BTC 17568A: Page 9 of 11



SPEEDLINE Drywall Systems, Adsetts House, 16 Europa View, Sheffield Business Park, Sheffield, S9 1XH.

Tel: 0114 231 8030.

Email: [enquiries@speedlinedrywall.co.uk](mailto:enquiries@speedlinedrywall.co.uk)

(As per the requirements set out in ISO/IEC 17025:2017 regarding test data the results stated have been carried out by voestalpine Metsec plc as part of the contract to supply Speedline Metal Sections to SIG Plc)